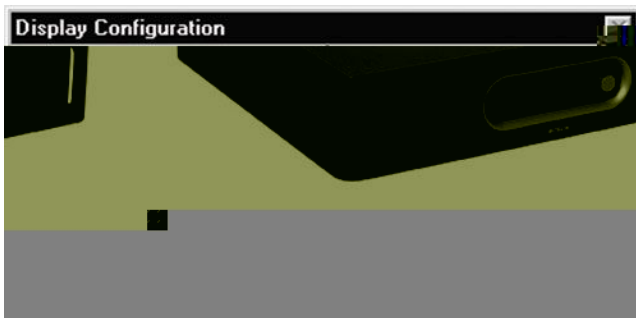




DCN-CCU Central Control Unit



- ▶ IF design award
- ▶ Control for up to 245 Contribution units
- ▶ Control facilities for an unlimited number of DCN-FCS 32 channel selectors
- ▶ 2 x 32 high quality audio channels
- ▶ Optical network for coupling the CCU to Integrus transmitter for Infra Red languages distribution and to Audio Expanders and Cobranet Interfaces to allow a variety of audio contribution and distribution facilities
- ▶ Optical network designed for redundant cabling. Can be either single branch or redundant loop
- ▶ Basic microphone management facilities
- ▶ Three operational microphone modes:
- ▶ Number of open microphones between 1 and 4
- ▶ Basic voting control for parliamentary voting procedure. Delegates can register 'Present', 'Yes', 'No' and 'Abstain'. The Cententus Chairman unit can start, stop and suspend the voting. The total results can be displayed on hall displays and on the LCD screens of the units. Also a page function is included which activates a voting tone. With this tone the chairman can indicate that a voting round is about to start.

In combination with a PC, the DCN Central Control Unit (CCU) brings greater sophistication to conference control. Users can access an extensive range of software modules, each with a specific function in controlling and monitoring a conference. These modules greatly expand the capacity to manage a conference. In the event of PC failure, this Central Control Unit will revert to its stand-alone operation mode, enabling the conference to proceed.

Functions

Controls and Indicators

- Mains on/off switch at front
- 2 x 16 Character LCD display at the front for status information and CCU configuration

- Rotary control at the front to navigate through the LCD menus
- Two red LED overload indicators for the DCN network outputs at the rear
- Two red LED overload indicators for the optical connections at the rear

Interconnections

- Euro mains socket with built-in fuse, matching 1.7 m mains cable (66.9 in) included
- Two DCN outlet sockets for connection of units, plus extension power supplies. Each socket is protected against short-circuit (2 x six-pole circular sockets)
- Two optical network connections for connection of Audio Expanders

- Two three-pole XLR balanced audio line inputs with optional galvanic separation.
- Two stereo Cinch unbalanced audio line inputs
- Two three-pole XLR balanced audio line output with galvanic separation.
- Two stereo Cinch unbalanced audio line outputs
- One headphone output 3.5 mm (0.14 in) stereo
- Two RS-232 serial data connectors for PC connection and diagnostic equipment

Technical Specifications

Electrical

Supply voltage	115/230 V +/- 10 %
Power consumption	200 W
DCN system supply	40 VDC, max 65 W per DCN socket
Optical network supply	40 VDC, max 65 W
Total supply power	130 W
RS-232 connection	2 x nine-pole Sub-D female socket
Frequency response	30 Hz - 20 kHz (-3 dB at nominal level)
THD at nominal level	< 0.5 %
Cross talk attenuation	> 85 dB at 1 kHz
Dynamic range	> 90 dB
Signal-to-noise ratio	> 87 dBA

Audio inputs

XLR nominal input	12 dBV (+/- 6 dB)
XLR maximum input	+12 dBV
Cinch nominal input	24 dBV (+/- 6 dB)
Cinch maximum input	+0 dBV

Audio outputs

XLR nominal output	12 dBV (+6 / -24 dB)
XLR maximum output	+12 dBV
Cinch nominal output	24 dBV (+6 / -24 dB)
Cinch maximum output	+0 dBV

Mechanical

Mounting	Free-standing or mounted in a 19" rack
Dimensions (H x W x D) with brackets, without feet	88 x 483 x 350 mm (3.5 x 19 x 13.8 in)
without brackets, with feet	92 x 440 x 350 mm (3.6 x 17.3 x 13.8 in)
Weight	7 kg (15.4 lbs)
Color	Charcoal (PH 10736) with silver

Ordering Information

Model | Description

DCN-CCU Central control unit
for all regions except North-America, charcoal with silver

DCN-CCU-UL Central Control Unit UL/CSA
for the North-America region, charcoal with silver

Hardware Accessories

DCN-FCCCU Flight Case for Central Control Units
holds 2 central control or audio expander units

Americas:
Bosch Security Systems
130 Perinton Parkway
Fairport, New York, 14450, USA
Phone: +1 585 223 4060
Fax: +1 800 289 0096
security.sales@us.bosch.com
www.boschsecurity.us

Europe, Middle East, Africa:
Bosch Security Systems B.V.
P.O. Box 80002
5600 JB Eindhoven, The Netherlands
Phone: +31 (0) 40 27 83955
Fax: +31 (0) 40 27 86668
emea.securitysystems@bosch.com
www.boschsecurity.com

Asia-Pacific:
Bosch Security Systems Pte Ltd
38C Jalan Pemimpin
Singapore 577180
Phone: +65 6319 3450
Fax: +65 6319 3499
apr.securitysystems@bosch.com
www.boschsecurity.com

Represented by